



Buzzwords ...

Postage Paid
Tauranga, NZ
Permit 486

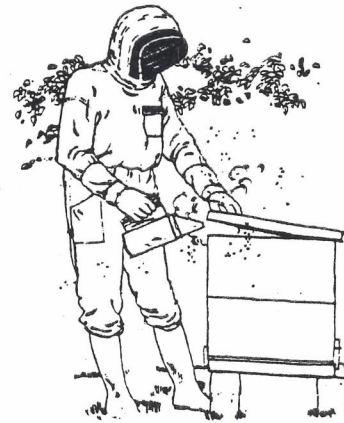
Return address:
Box 4048
Wellington

..... the newsletter for National Beekeepers' Association members

IN THIS ISSUE . . .

- * Why have a newsletter?
- * The latest on sugar duty
- * Varroa found on wasps
- * Food fairs coming up
- * Export statistics
- * US honey trade

BUZZWORDS No 1, September 1988



MESSAGE FROM THE NBA PRESIDENT

It gives me much pleasure to introduce the inaugural edition of the newsletter for National Beekeepers' Association members, which has been appropriately called *Buzzwords*. The NBA executive have a strong belief in the need for better communication, as was stated in an objective in this year's industry plan. This was to improve the effectiveness of the NBA through the establishment of a newsletter for distribution to members by December 1988.

In an industry with a widely dispersed membership such as beekeeping, good communication is especially important. The intention of this newsletter is to improve the profitability of New Zealand beekeepers by providing them with relevant, timely and readable information. It is intended to

provide up-to-date news on marketing, overseas developments, some product information, and snippets of technical interest.

There will be brief items from executive meetings, where major issues have been discussed which affect NBA members. The current negotiations to provide for disease inspection services is a prime example, where the need to "keep up with the play" is critical for us all. The MAF apicultural advisers will add their bit as well, and it is almost certain that their own district newsletters will now be discontinued. They intend to include much of the valuable information from those newsletters in the NBA *Buzzwords*, and that will be of benefit to us all as this newsletter is being sent to all NBA members.

With an intended monthly publication, (except January), then branches and clubs can use the newsletter to advertise meetings and field days. This will require a bit of forward planning of course, but is an ideal opportunity to spread the word about your activities. We will be looking for items of interest from beekeepers as well - if you come across something newsworthy, then pass it on through the newsletter.

The newsletter is being compiled and produced by Andrew Matheson, AAO Tauranga, under contract to the NBA. Funding support has initially come from the Industry Trustees. Andrew is open to suggestions on developing the content of the newsletter, and will be especially looking for information to include in it. Not everything will necessarily be published, but the opportunity exists for us all to keep in closer touch with developments affecting our livelihood and interests as beekeepers.

One final important item - *Buzzwords* is in no way intended to replace or compete with our NBA journal. *The NZ Beekeeper* will continue to maintain its place as one of the best beekeeping publications in the world, and contributions to the *Beekeeper* will continue to be sought after by our editor.

The NBA and our industry have many challenges ahead, and we must all be aware of the changes affecting us. I believe the introduction of this newsletter is an exciting and important development in achieving the goals and objectives of our association, as we work towards our mission for "Better Beekeeping - Better Marketing".

Allen McCaw
NBA President

HOUSEKEEPING

The introduction from Allen McCaw has outlined how this newsletter came to be born, and what your executive hopes that it will do for beekeepers. Now for a few housekeeping arrangements.

My job is to summarise relevant information from as many sources as possible, and write it in a "digested" form. Where other people are contributing, their name will appear at the end of the item; otherwise the writing is mine. There won't be any "buy, sell and exchange" advertisements in the newsletter, though there may be some display advertising in future.

Above all, this is your newsletter. We encourage you to share ideas or news - anything that you or your association would like to make available to other members might be useful. I would particularly like to see branches and specialist groups swap news of successful activities - meetings, field days, promotions.

Copy by the 20th of each month (except December) to:

Andrew Matheson
"Buzzwords"
c/- MAF
Private Bag
Tauranga

Phone and fax number is (075) 82 069.

For the moment at least, MAF regional magazines won't be published. We will still service the information needs of beekeepers - by contributing news items to *Buzzwords*, and writing longer articles on technical subjects for the *New Zealand Beekeeper*. This arrangement will be reviewed regularly, and MAF's local beekeeping magazines can always be restarted.

LATEST ON SUGAR DUTY

Beekeepers will have to wait a while before they find out if the anti-dumping duty imposed on sugar last month is here to stay. The New Zealand Sugar Company complained to the Customs Department that refined sugar being imported from Malaysia, Thailand and West Germany was actually being dumped.

The Customs Department has provisionally found that the three countries have dumped sugar in New Zealand at uneconomic prices. The duty, which applied from 18 August, is \$US65 per tonne on Malaysian sugar, \$US60 on Thai and \$US68 on West German.

The provisional duty applies for 90 days, to give the Department time to make a ruling. Meanwhile one of the three major importers, Kerry (New Zealand) Ltd, is challenging the duty on Malaysian sugar in a High Court action beginning on 19 September.



MORE STATES REPORT VARROA FINDS

Varroa mites have now been confirmed in 16 states, according to the magazine Speedy Bee. The latest three states to report the mite are Indiana, Massachusetts, and North Dakota, and join Florida, Illinois, Maine, Michigan, Mississippi, Nebraska, New York, Ohio, Pennsylvania, South Carolina, South Dakota, Washington and Wisconsin.

VARROA AND WASPS

Varroa could spread more quickly in New Zealand than in some other countries, because of our high wasp population. Wasps have been found to act as Varroa carriers in Germany.

Wasps were seen foraging on dead larvae from hives that had died out as a result of Varroa infestation. An examination of three combs (each about half a metre across) from the wasp nest showed that mites were present in some cells and on adult wasps (1-2 mites per wasp).

There's no evidence that Varroa can reproduce and develop in wasp brood cells, but it is now certain that wasps can contribute to the mite's spread by shifting it between beehives.

(The German language paper which reported this study was summarised in Apicultural Abstracts, 244/88).

FOOD IRRADIATION

The working party on food irradiation will be reporting back to the government shortly. Their preliminary findings are that:

- irradiation of food for human consumption should not be permitted in New Zealand.
- imports of irradiated food should be banned.

If these recommendations become policy, it will be very unlikely that beekeepers will have access to an irradiation plant in the foreseeable future.

HIVE LEVY

The executive's decision to apply for an increase to the hive levy to 48c was not taken lightly. The adjustment was needed partly to compensate for the effect of a nil increase last year, and partly to ensure the NBA's continued viability.

YOUR NATIONAL SECRETARY HAS

- * Environmental directory - a list of groups and organisations associated with conservation (1988).
- * Federated Farmers 1988 directory.

BECOME A GREENIE

Support the environment, become a friend of ECO (Environment and Conservation Organisation of New Zealand). For \$20 per year you get their monthly newsletter and notice of seminars and conferences. ECO, Box 11057, Wellington.

OVEREXPOSURE

With "Expomania" still in full swing, perhaps it's time to note some more expos coming up.

- * Fukuoka, Japan, 1989. The New Zealand pavilion will include a 300 m2 supermarket stocked with kiwi goods. The Food and Beverage Exporting Council is encouraging food producers to contribute. Contact John Corner at AFFCO, phone (09) 774 600 or fax (09) 391 674.

- * A firm called XPO Exhibitions Ltd is organising an international fair called "Fine Foods International '89", or FFI '89 to its friends. This will be held in Auckland from 10-13 May 1989. Further information from Wayne Annan at XPO Exhibitions: PO Box 9682, Newmarket, Auckland; Phone (09) 398 011 or 793 885, Fax (09) 793 358.

- * Food Trade Fair in Lyon, France, 21-25 January 1989. Your executive secretary has application forms for the "4th Salon de Metiers de Bouche", organised by Sepel-Eurexpo, BP87, F69683, Chassieu Cedex. Fax 72 22 3270.

THE LATEST STATISTICS

The Statistics Department's latest demographic profiles are being promoted as a useful tool for marketers. You can get breakdowns for 314 different areas, and they include information such as household size, income, and age distribution. They come on paper or floppy disks.

Contact the Department's information offices in:

Auckland	(09) 31 055
Wellington	(04) 729 119
Christchurch	(03) 793 700
Dunedin	(024) 777 511.

NEW ZEALAND EXPORTS:

JANUARY-JUNE 1988

(Prices are in \$NZ/kg)

Beeswax

26 tonnes, average \$4.27/kg f.o.b.
Major buyers: Netherlands, UK

Comb honey

188 tonnes, average \$6.60/kg f.o.b.
Major importers: UK, Saudi Arabia, Japan

Natural honey - retail packs

185 tonnes, average \$3.25/kg f.o.b.
Major buyers: Australia, Switzerland

Natural honey - bulk

803 tonnes, average \$1.80/kg
West Germany, Japan, UK, Netherlands

Honeydew - in bulk

92 tonnes, average \$2.38/kg
West Germany

(Extracted from Customs Department figures)

NO BEE STAMP IN 1989

There'll be no beekeeping stamp next year to commemorate 150 years of beekeeping in New Zealand.

"Annual stamp programmes are drawn up approximately two years in advance, to allow sufficient lead time for the design and production of each issue", according to Mr G Sheat, Philatelic Manager for New Zealand Post.

Mr Sheat also points out that far more requests are received for stamps than can be fulfilled - about 40-50 suggestions each year.

The bee stamp was requested by the NBA executive, after a remit was passed at the association's annual conference in July. The issue would have commemorated 150 years of beekeeping in New Zealand.

The first recorded introduction of honey bees was made in 1839 at Hokianga in Northland, by Miss Mary Bumby, sister of a missionary.

TRADE TABLE

- * Need Arabic script in your export labels? Pace (09) 278 8179 can translate and lay out material.

- نيوزيلاندا -

USHONEY MARKET REPORT

US trade - figures in US cents/lb

Equivalent New Zealand prices (\$NZ/kg, @ 0.63)

Imports (March 1988)

285 tonnes, average value 58c/lb \$2.03/kg
Major sources: Saudi Arabia, UAE, West Germany

Prices paid to importers for bulk honey, duty paid, containers included, ex wharf. (for month of June)

West Coast ports: Argentina, clover, white, 46-67c/lb \$1.61-\$1.64/kg

Gulf ports: Argentina, clover, white, 40c/lb \$1.40/kg

East Coast ports: China, mixed, white, 43c/lb \$1.50/kg

China, mixed, LA 37c/lb \$1.29/kg

Argentina, lucerne and clover, white, 44c/lb \$1.54/lb

Exports

Grade	Amount	Average value	\$NZ
March 1988:			
ELA and lighter	1 178 tonnes	33c/lb	\$1.15/kg
LA and darker	728 tonnes	32c/lb	\$1.12/kg

Total 1 906 tonnes

January-March 1988:

ELA and lighter	2 566 tonnes	35c/lb	\$1.22/kg
LA and darker	1 920 tonnes	33c/lb	\$1.15/kg

Total 4 486 tonnes

Honey loan programme

1987 crop year, as at 31 May 1988

Number of loans made	11 066
Quantity put under loan	94 044 tonnes
Loan quantity repaid	45 735 tonnes
Loan quantity liquidated	203 tonnes
Quantity outstanding	50 240 tonnes

Local Market

Beeswax		
Dark	\$1.00/lb	\$3.49/kg
Medium	\$0.95/lb	\$3.32/kg
Light	\$1.00-1.10/lb	\$3.49-3.84/kg

PRODUCTION

Andrew Matheson, MAF, Tauranga
Nick Wallingford

DISCLAIMER

The views expressed in *Buzzwords* are not necessarily those of the National Beekeepers Association of New Zealand or the Ministry of Agriculture and Fisheries.