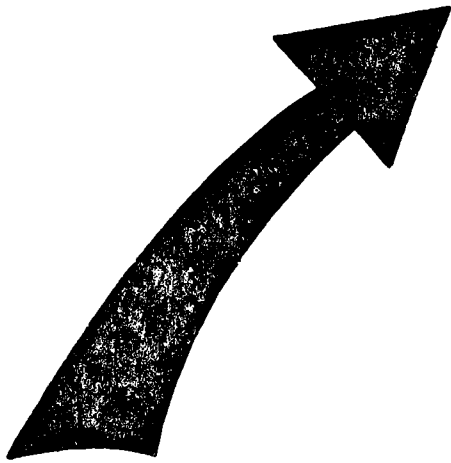


# BEEKEEPERS

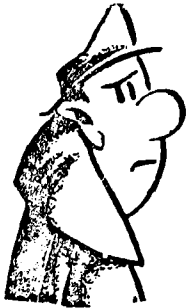
## YOUR NEWSLETTER



MAY 1976 : NO. 8

---

1. Well, by now you are only too well aware of the past season's results. What crops have been secured appear to have varied from place to place. Over the district it is apparent that only about a third crop has been secured. One strong point emerges in a season such as this one. Human nature being what it is, there is a tendency to swoop on that "extra" frame of honey from "down below". Try and resist this one. It's essential in a season like this one that the hives be kept in as good a condition as possible through the winter and early spring. You simply must have your hive numbers up to peak level, and the condition of them as well for next year, otherwise you just can't catch up on the season we've just experienced. It could well be (and we certainly hope so) that next year could be a good one. Now if you allow your hive numbers to drop and the condition of them to slip back, then you'll be still fighting next year when perhaps you should "come right". Some of you will probably take a job to help pay for the butter for your bread - but don't neglect your hives. You may be faced with the decision to defer some maintenance work or perhaps even hold over a development plan. Be this as it may, it would be preferable to allowing your hive units to suffer. After all, it is the hive unit that's the providing factor for any development (or the purchase of your new caravan) - let your units slip back and you'll dip out both ways.



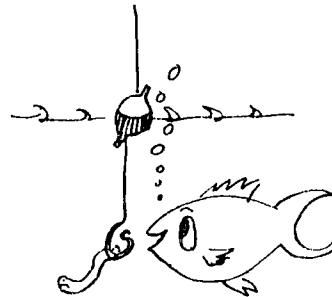
## 2. WINTER STORES

It looks like a winner for the Sugar Company this year. By and large hives are below average as far as winter stores are concerned.

It would be better to get sugar syrup into your hives now rather than feeding the syrup in the dead of winter. If your hives have enough honey to cope with over the main winter period, well then, keep your feeding programme till the spring. Sometimes this aspect is overlooked until it is too late. Keep an eye on those pollen combs. There wasn't much offering by way of pollen sources this late autumn. (A pollen supplement recipe was attached to my September 1975 Newsletter.)

There might also be a tendency for some of you to buy in combs of feed honey!?! (I don't know where you'll get them.)

DON'T GET CAUGHT,  
THOUGH



Check out this one from the disease angle. If necessary have a chat with your Apiary Instructor about it. You've only got to lose one or two hives with disease and its been a costly feeding programme.



### 3. GROUP DISCUSSION

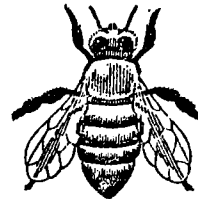
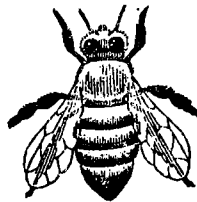
A very profitable "get together" was held on the property of Roy Robinson, Walkers Road East, Katikati, recently. Mainly domestic and semi commercial beekeepers were present. Judging from the keenness of questions and open discussion, those present felt it was well worthwhile for them to travel to Roy's place.

Barbara rounded off the afternoon with a very welcome "cuppa".

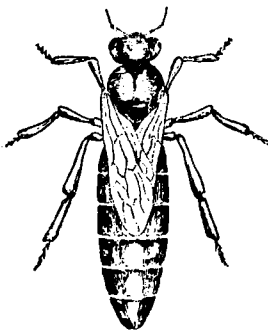
From my point of view, this type of get-to-gether is "spot on" and I'd be happy to meet with any other interested groups.

You did a good job, Roy, and keep it up.

(Now what about some other groups.)



### 4. QUEENS



You are probably all aware that Bruce Stanley is in the Queen Bee rearing business at Taneatua. (His address is 20 Henderson St, Whakatane, by the way.) Was talking to Bruce the other day and he said he had some queens available - get your orders in early for this coming season. Theras Broadley at Thames had a set back in his queen rearing enterprise but it's hoped that this will only be temporary.

There is a dearth of good quality queen bees in the beekeeping industry and there certainly is room for improvement in bee stock.

By the way, if you have something special by way of a good hive (queen) you might like to make it available to one of these Queen breeders - if so, and you would like an opinion on it, give me a call and I'll have a look at it for you. Remember, you belong to the beekeeping industry and your "contribution" could help the end result.



#### 5. RESTRICTED BEEKEEPING ZONES

Dare I mention it?! - guess I'll take the chance.

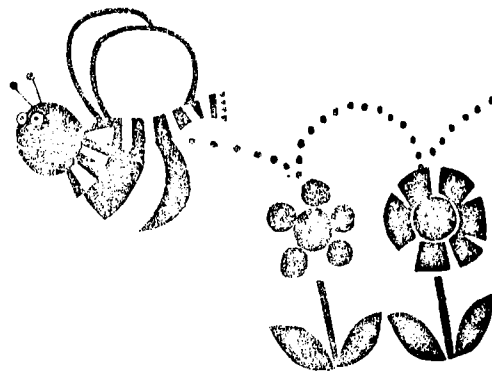
If you're considering placing some hives in these areas, could you get your application for a permit in pretty soon. (Full details of location and hive numbers on each site are required.) There is a small delay in the preparation of these permits so don't leave it till the last minute. You must have your permit before the hives are moved into these areas.



#### 6. BULLETIN NO. 267 : BEEKEEPING IN NEW ZEALAND

Would you believe it - it's now available, but the price has gone up like everything else - \$4.50 to be exact.

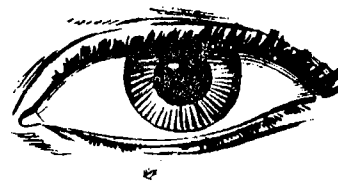
I've had numerous enquiries for this publication, so now's your chance and would you pass the word round that it's in stock again. Don't let the price upset you, I still think it's worth it.



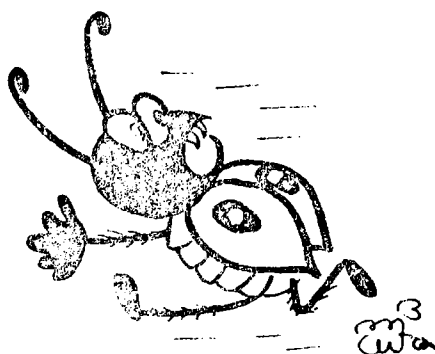
## 7. WAX MOTH

The storage of empty combs is one that you'll have to watch this year. With fewer supers full of honey, the storage of the "empties" will be over a longer period. Wax moth is undoubtedly the greatest curse you have to contend with as far as combs are concerned, especially for those of you who live in the warmer parts. Other than using fumigation methods the best way to control this moth is to store your combs, 8 to the super evenly spaced, in a cold draughty place. By keeping the temperature low in the supers, hatching of the eggs of the wax moth is delayed, if not prevented. It's also recommended to store the combs in three categories, i.e. (1) light or virgin honey combs - (2) combs containing some pollen and mecodium (3) brood combs.

If you don't employ a total fumigation plan each year, it would be very wise to keep your eye on the condition of your stored combs as the season progresses. Once the moth starts they can cause havoc in a very short time.



Remember that apart from the bees themselves, your combs are the most valuable asset you have.



8. BEESWAX

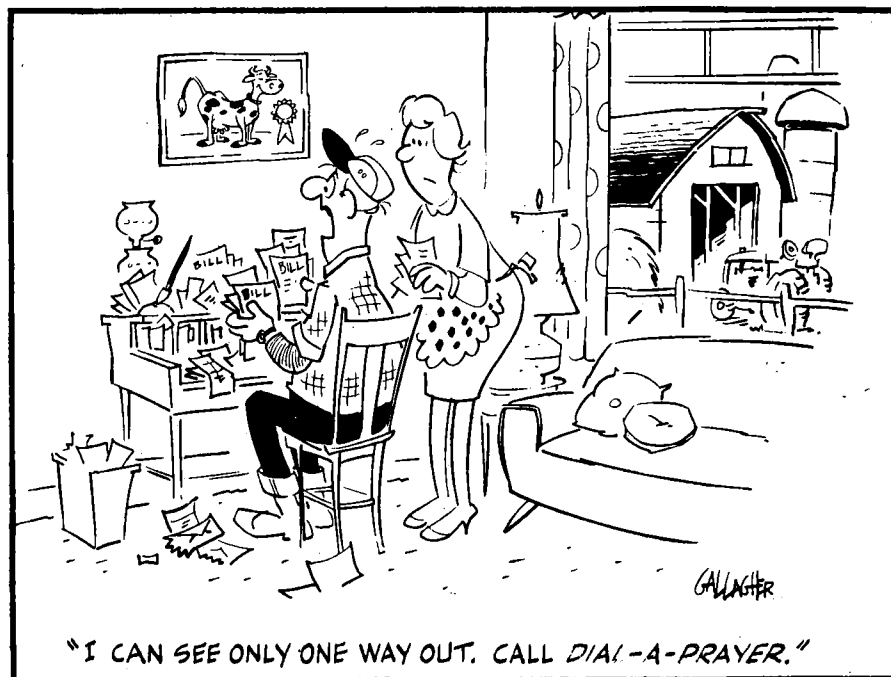
Old combs should be weeded out now, while you are sorting them for storage. At \$2.00 per kilo the wax is worth collecting. Even if you have it converted to comb foundation for your own use, you are making a worthwhile saving.

Did you know that it's over \$40.00 per carton now? So remember, these old combs and burr combs and scrapings from the frames in the hives is a profitable exercise.

Don't waste it - re-cycle it.

With my next Newsletter, I will be giving you construction details of a Solar Wax Extractor - an excellent piece of equipment.

Good Wintering, and will be with you again in the spring.



D.A. BRISCOE  
APIARY INSTRUCTOR