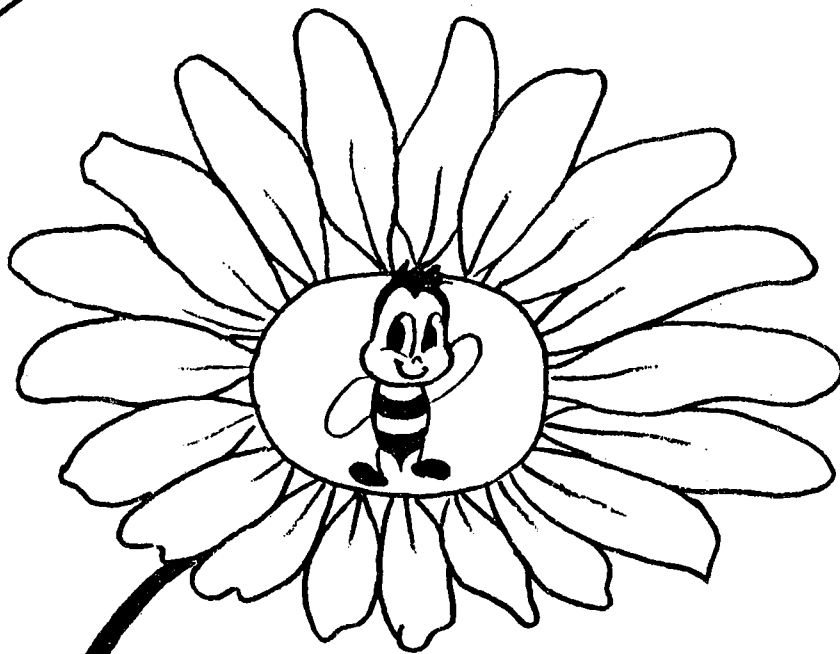


11



NO. 5

AUGUST 1979

**waikato
bee
notes**



Ministry of
Agriculture
& Fisheries



Hi there. Hope you're enjoying a good winter and getting all those jobs done you put off 'till now!!

Many colonies are getting very light in stores with this mild weather. If you haven't ordered your spring sugar supplies, do it now. Sugar has been caught up in the railway backlog and it may take some time to clear large loads.

APOMONDIA CONGRESS: ATHENS 1979

I'll be joining the N Z Beekeepers tour to the Congress in Athens; leaving August 12 and coming back September 23.

"Yes, it will be a great tour",

"And Yes, I'm sorry too that you can't come along",

"And No, the Government is not paying me one cent to go",

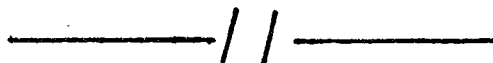
"And No, I'm not overpaid, I had to borrow a lot of money for my fare",

"And Yes, I'll organise a social slide evening when I get back to tell you all about it!"



Buzz sends this one to the NBA Conference -

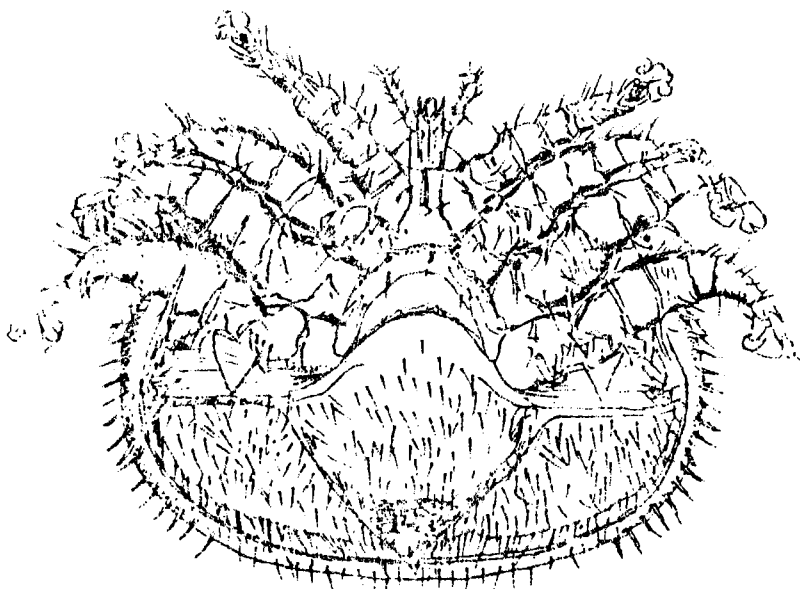
"If you're not part of the solution, you're part of the problem".



VARROA MITE

This mite is turning the beekeeping world upside down. You don't know what it is?

Then dig out your March 1979 issue of the N Z Beekeeper and READ or RE-READ Pages 28 - 31.



Adult female Varroa jacobsonii
by courtesy of "Bee World" autumn 1968

The latest news is that it has been found in several new countries, including Bulgaria, Hungary

(June 1978), Romania, the USSR, Yugoslavia, Czechoslovakia (Summer 1978), and Greece (Autumn 1978); Poland is still apparently free.

It is indemic in Asia and caused heavy colony losses in Turkey in the summer of '78.

It's been found in Tunisia and that puts Algeria and Morocco at risk as there are no natural boundaries between them. Libya has imported thousands of hives from Bulgaria so the mite will no doubt

show up there soon. It can't be controlled in North Africa as over 80% of the colonies are of the fixed comb type.

In South America it is now in Argentina, Paraguay and has recently been found in Brazil.

That leaves Australia as the only continent "free" of Varroa, and they have been importing queens from Germany, Austria and Italy, although under quarantine conditions.

One source in West Germany said that by killing 4 - 5000 colonies beekeepers hope to eliminate the disease.

SOURCE: Bee World 60(i): 1979 Amer. Bee Journal April 1979.

• • • • •

Buzz has another thought for Conference!

"The Lord gave us commandments - He didn't mention amendments".



FLOOD DAMAGE AND INSURANCE

One of our members has recently has occasion to make a claim for flood damage to hives. Insurance companies can be real contortionists when it comes to twisting and wriggling.

It seems that under some policies "flood damage" is interpreted as being damage done while the hives (supers) were in a shed, not out in the paddock. Therefore an overflowing river is "not a flood".

However, in general claims for flood damage under the normal sense of the word, are covered by Earthquake and War Damages. The area doesn't have to be declared a disaster area first.

You must have your hives insured against fire and pay a levy through your insurance company to the Earthquake and War Commission. The claim is made to the Commission through your insurance company.

The claim can only be made on equipment - not the bees or loss of production. You should claim for the cost of replacing lost equipment only, plus labour and other costs to get it into production; less the value of any salvaged gear.



TIMBER FOR BEE BOXES

In my last newsletter I recommended you try the box factory at the Frankton Dairy Company for cheap supers; your contact Stuart Moffat.

They have price rises like everything else and the latest prices for 21 mm pine cut to length only are :

Full depth	(242 mm deep)	\$1.60 each
$\frac{3}{4}$ depth	(185 mm)	\$1.20 "
Cut comb	(150 mm)	\$1.20 "
(They also call these $\frac{1}{2}$ depths)		

$\frac{1}{2}$ depth (133 mm) \$1.00 each
 (They call these $\frac{1}{4}$ depths)

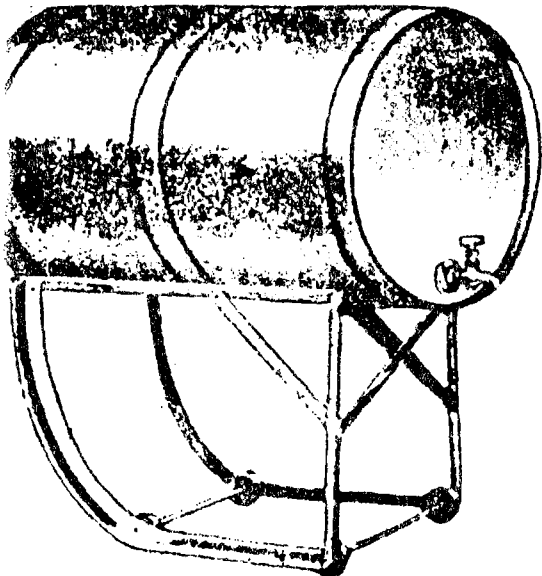
Make sure you specify the depth when ordering to avoid any problems over nomenclature. NOTE The box factory will be very busy with other work from mid August to next March.

If you use benzaldehyde fume boards, wash them regularly. The crystals that form can spontaneously ignite if placed in an enclosed area.



Buzz overheard motorist to petrol pump attendant - "Just \$30.00 worth, I'm in a hurry! On second thoughts, maybe that's not very funny after all".

** ** * **



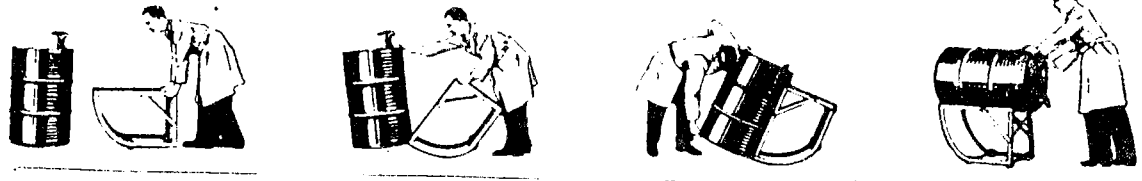
Drum and Barrel Racks

L30 DRUM RACK

This sturdy unit is fitted with four 4in. (101.60mm) nylon wheels well spaced to provide ample wheel base. Also fitted (as an extra) with safety chain and lifting handles if required.

SPECIFICATIONS

Model	Length	Base Width	Top Width	Top Rail Height	Height to Bung	Weight
L 30	30 762mm	$\frac{1}{2}$ in. 30mm	15 $\frac{1}{2}$ in. 393.70mm	20 in. 508mm	22 in. 558.80mm	30 lb. 13.61 kg



MELTING HONEY IN DRUMS

This is a real hassle and an expensive business, especially if you only want to melt out one or two drums, or just keep a drum of liquid honey for door sales. This is how it's done in the South Island anyway.

A tipping cradle, like the one above, is purchased or constructed. * A stainless reflector shield is attached underneath and then some heating cables are fixed above this. A 2400 watt black heat oven type element works well. A heat probe is attached to the drum to control the temperature.

A drum of honey is laid on the cradle - it's easier if two people do this - and an insulation cover such as asbestos blanket or tarpaulin is thrown over the top, or an insulated box can be placed over the drum or drums. A drum can usually be melted out within 24 hours.

Some beekeepers allow the melted honey to run straight out of the bung into another heating system. Others do the complete melt in the drum itself. The warm honey rises to the top of the drum which becomes quite hot, the centre is cool and the bottom warm.

As the honey closest to the element moves away (avoiding overheating) the weight of the candied honey presses down onto the heated bottom and helps displace the liquid portion.

Swinnock & Co Ltd, Box 12-184, 17 O'Rorke Road, Penrose, Auckland
Phone 598-624. Current prices for L30 drum rack \$78.32 plus
freight.



Buzz says he could tell you how to
cure apathy, but what's the use !

**TANALIZED TIMBER - YOU'VE BEEN
WARNED BEFORE**

You can't be too careful with this stuff.
Recently one of our members bought some
tanalized plywood for hive construction.



He read on a chart at his local timber
yard the commodity specifications denoted as C1 (timber and
piles in water), C2 (round poles in ground contact), C3
(sawn timber, posts in ground contact) etc. C7 (sawn timber not
in ground contact) C8 (building timber). So far so good - the
amount of toxic substance is decreasing. Then came C9 (suitable
for bee hives). He got all excited here but as he wanted plywood
he bought some C11 and reasoned that as C9 was safe for bees, C11
must be even safer!

WRONG WRONG WRONG !

The commodity specifications C10, C11 and C12 refer to plywood
and particle board; C11 in fact contains high levels of arsenic
in the preservative. This is exterior grade ply treated for
exposure to the weather. It will be Branded with the letter 'J'
and the word "treated".

C10 plywood is for out of the weather use. If it is treated with preservative, it will be marked "Treated - TLH". If it has an insecticide in the glue, it will be marked "Treated - T.G.L".

C9 by the way, is the product Cee Bee which doesn't contain arsenic. Senton mill at Orini used to treat timber to this specification but not anymore; unless perhaps someone placed a large order.

So please be careful.

In the USA 364,000 tonnes of pesticide are applied to crops to control 2000 pest species

PETROL REFUNDS : ROAD
USER CHARGES

Don't miss out on this.
There are two types of
refund available.

(a) For off road travel
(Form NRB25)

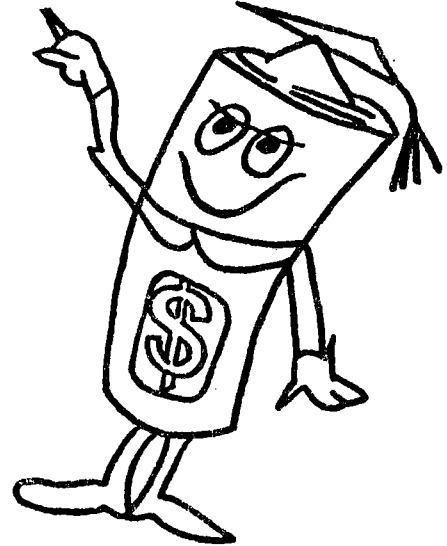
(b) Petrol refunds
(Forms M.R.70 and
M.R.71).



All forms available from the Post Office. You can also lodge your application at the Post Office or mail it direct to "The Registrar of Motor Vehicles, Motor Registration Centre, Private Bag, Palmerston North".

Any enquiries about claiming for refund are made to -

"Commissioner of Works
 (Road User Charges)
 Ministry of Works and Development
 Box 12-312
 Wellington North"



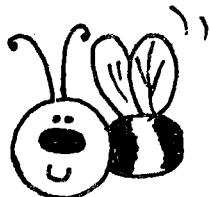
The refund is worth 9.7 c/litre

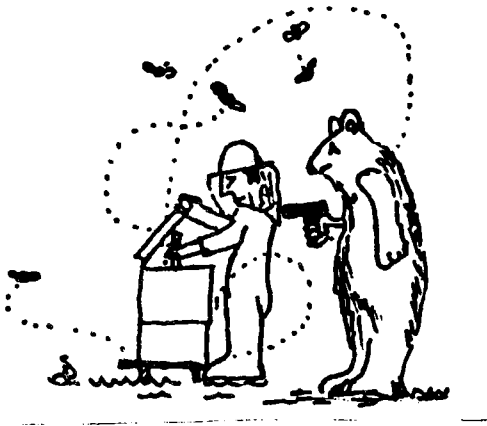
To successfully lodge a claim, you need ACCURATE and DETAILED petrol consumption records. If you have a bulk tank you must proportion out the gas used by each vehicle. There is little room for "fiddling here" as the fuel consumption figures are compared with a "travel rating" for your class of truck. Any gross discrepancies and they may reduce your claim.

You should supply cash receipts, garage accounts or petrol company records for bulk tanks with your claim.

A SEPARATE application must be lodged each quarter, not later than the 14th day following the close of the quarter. The quarters end on the last days of June, September, December and March

It might pay to do this yourself, rather than rely on your accountant!





Buzz overheard a psychiatrist telling a colleague "the thing about kleptomania is that if you have got it, you can always take something for it".

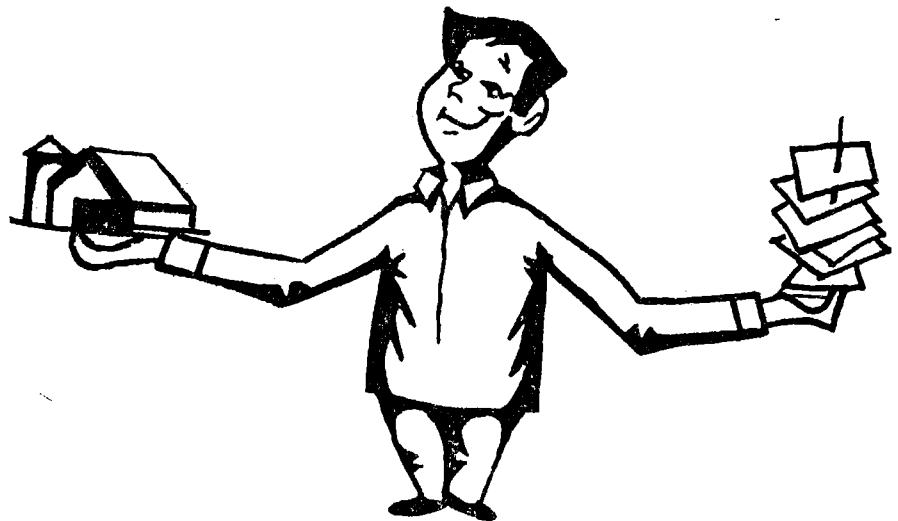
*** *** *** ***

DECISIONS DECISIONS

The Health Inspectors are putting the squeeze on some of you to improve wall linings and floor surfaces.

There are numerous suitable products on the market. Here are some of them.

I don't have prices for many of them as the companies quote 'per job'.



FLOORS: (applied by spray, brush or in sheets)

** Sureshield Fibreglass

721 Great South Road

Penrose, AUCKLAND : Contact K Ryan

This is a silica sand bonded with fibreglass. It is about \$25 per square metre, is 5-6 mm thick and has a five year guarantee.

** Carbolene.

This is a 3-4 mm thick fibreglass finish and much cheaper than Sureshield. I don't have any more details on it yet.

** Polyflor

102 High Street

HAMILTON : Contact Mr Davidson

A 1-2 mm thick plastic based covering.

** Formrok

W G Hitchins Limited

12 Uxbridge Street

Renwick, BLENHEIM

Similar to Polyflor products and Vynic

** Vynic

Novaplast

P O Box 50-013

Porirua

** Revertex

Decorative Finishes

63 Bandon Street

FRANKTON (down the west or residential end)

Contact Bruce Comerford.

Flecto is one product they have for floors.

** Muralflex

Muralflex Products Limited

Gavin Street

Ellerslie, AUCKLAND 5

An acrylic coating sprayed on. About \$13.00 per square metre.

** Sprayed on fibreglass. Most swimming pool installers.

See yellow pages, e.g. Mayfair Pools

65 Victoria Road

CAMBRIDGE

** Modopox

Paint Industries Limited

7 Akatea Road

Glen Eden, AUCKLAND. : Contact B T Whalley - Manager

A two pot epoxy paint diluted with water. Available in 8 litre units (2 cans of 4 litres) at \$48 and 200litre units (25 x 4 1 pack A and 25 x 4 1 pack B) \$1200 less 10% and freight free to Hamilton. I've put a small trial area down in Lorimer's honey house, Hamilton to see how it performs.

WALLS:

** Muralflex

** Polyflor

** Formrok

** Revertex : Situflex for interior walls and Kenitex for exterior concrete block walls.

** Fibreglass

** Seratone (about \$35 per sheet 2400 mm x 1200 mm.
Suggest you buy seconds at around \$20 per sheet.

** Modopox

I've prattled on long enough. Here's hoping the spring is kind to us all.

Regards,

Murray Reid.

Murray Reid
Apicultural Advisory Officer
HAMILTON

