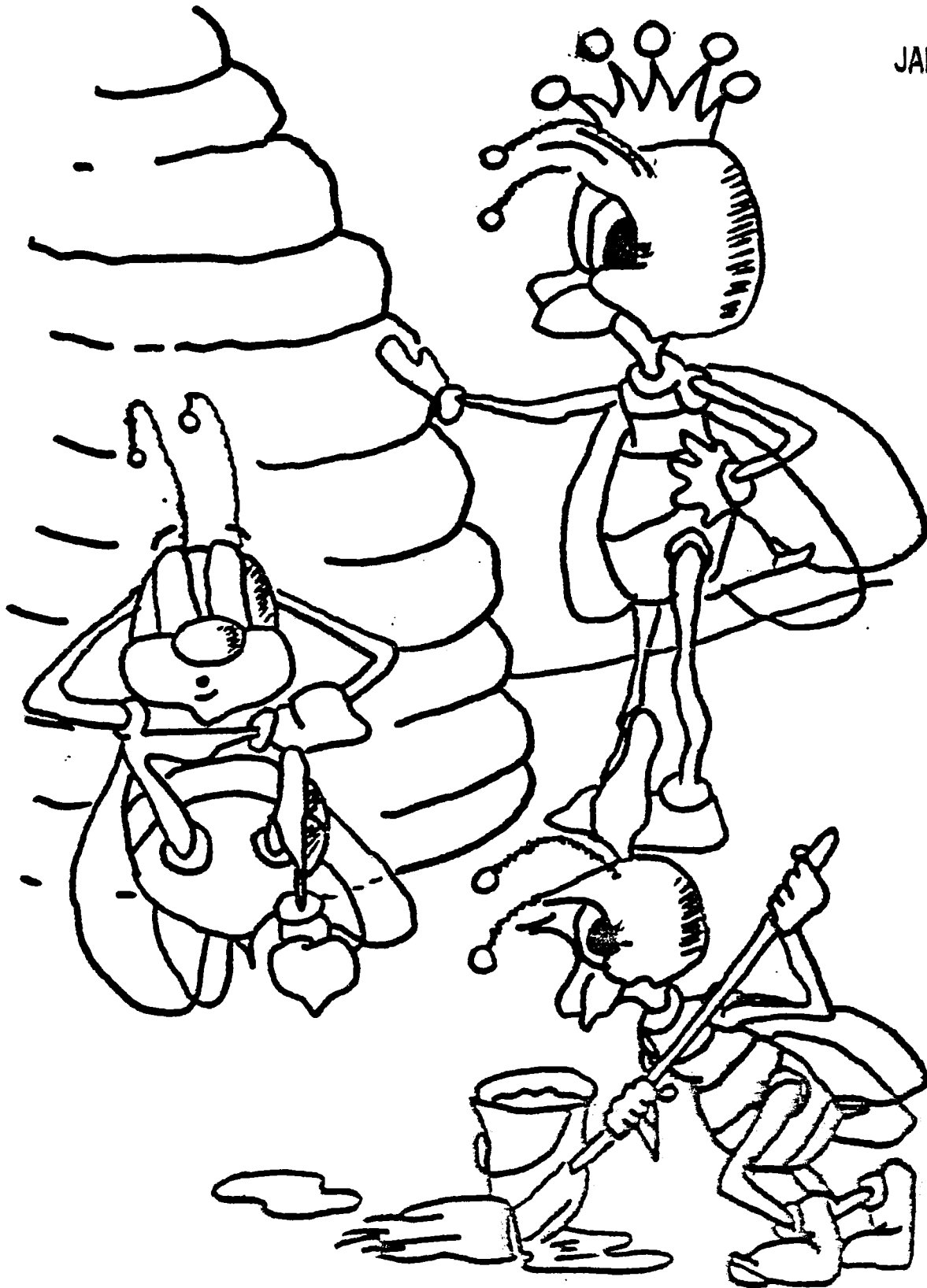


# YOUR NEWSLETTER

JANUARY 1985

NO. 34.



Ministry of Agriculture & Fisheries  
Private Bag  
Tauranga

Clive Vardy  
Apicultural Advisory Officer

Telephone: 82 069

## YOUR NEWSLETTER

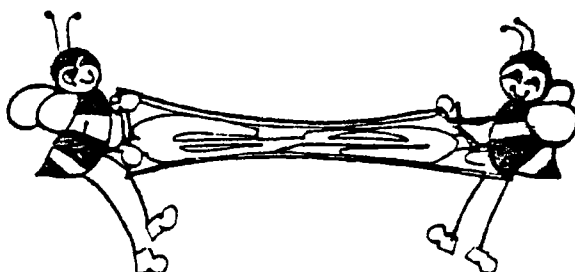
NO. 34

FEBRUARY 1985

Hello, this issue has a new editor. I have met many Bay of Plenty beekeepers during the last few months and if I've missed you personally, I hope to make your acquaintance soon. I am a Canadian seconded to Trevor Bryant for the summer.

A few comments about the New Zealand industry in general are appropriate for my issue. I am very impressed with the beekeeping in this country. New Zealand beekeepers stand second to none - ability, skill and innovation catch my attention everywhere. Good old Kiwi ingenuity does yeoman service here and stretches the dollar more than I have ever seen before.

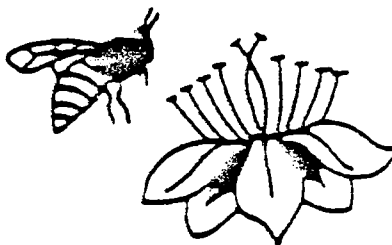
BEFORE I SAY ANYTHING I'D.  
LIKE TO MAKE A  
SPEECH.



*Do you know what the Canadian definition of an "expert" is?*

*Someone who wears a three piece suit, carries a briefcase and lives as far away as possible!*

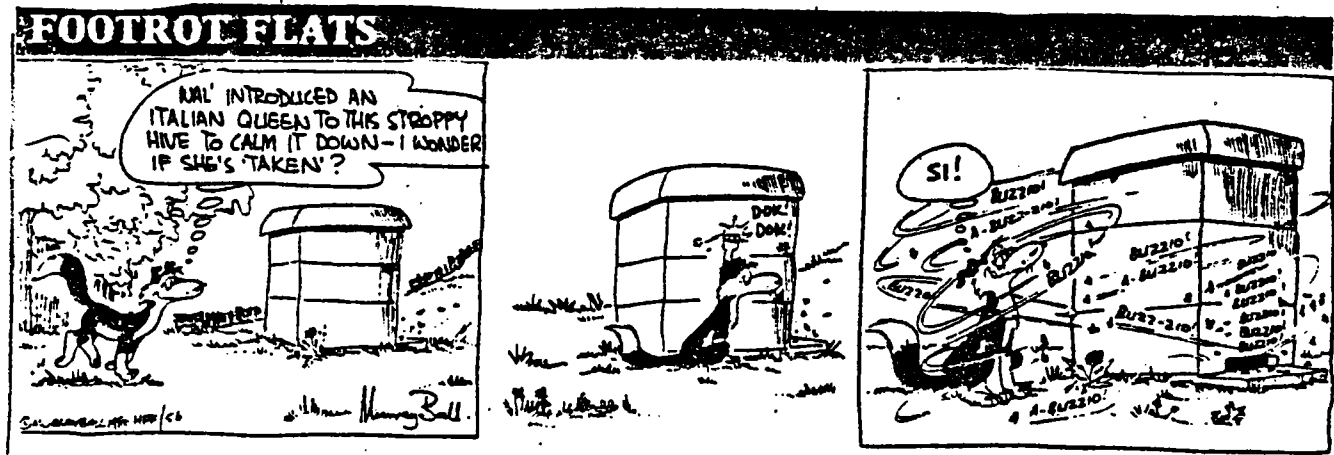
Don't fall into that trap here. New Zealand beekeeping is well developed and superior to most overseas apiculture. Look to the successes at home, some of them are spectacular. Just because it's imported doesn't mean it's better!



"She'll be right mate" - that attitude, however, has distressed me in the last few months. Given the above mentioned advantages, all too often a potentially good product is inferior, simply from inattention to detail. Lack of quality assurance, if New Zealand beekeeping has a downfall, it's poor quality control.

What is the use of producing a premium honey if mediocre packaging and presentation forces discounting? What is the use of expanding a kiwifruit pollination operation if your hive performance chases your clients away? Would you use the queen, that you are willing to sell, in your own colony? Do you stand behind your products? These questions need not be asked if everyone took responsibility for their own products and actions.

Overseas markets demand good quality assurance. If they cannot expect first rate products from a responsive industry they will go elsewhere, and have done so in the past. With devaluation and overseas honey bee pest problems many lucrative export opportunities now exist. As individual beekeepers participating in a national industry, let's take advantage of these new markets, but rather than doing the expedient let's do it right the first time, every time!



\*\*\*\*\*

POLLEN SUPPLEMENT SURVEY



In the last newsletter I included a simple questionnaire on the use of pollen supplements.

There is a genuine interest in the lactalbumin based patties, with these points standing out.

POLLEN, DID SOMEONE SAY POLLEN?
---------------------------------

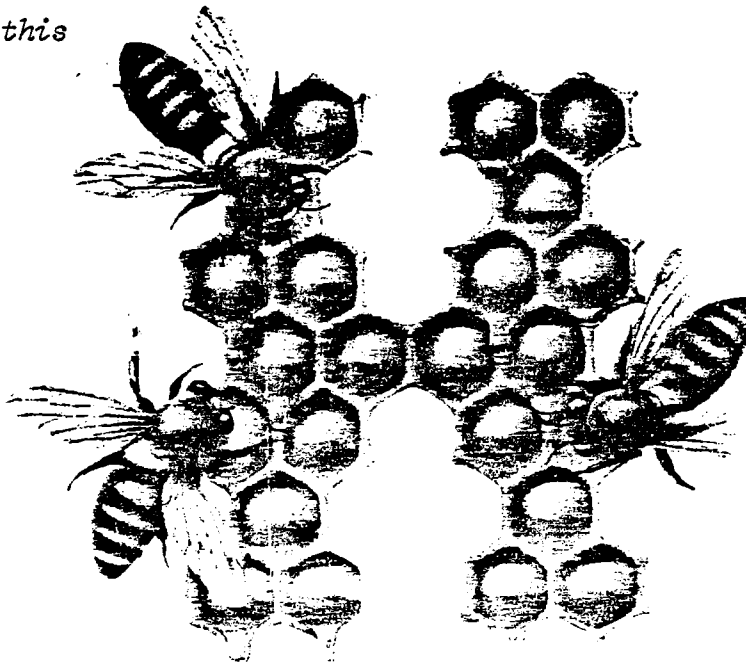
- Those beekeepers who tried pollen supplements (and responded) remain converted. They are prepared to experiment if they are unhappy with an aspect. None viewed the exercise as wasted effort.
- Most report observable improvement in honey production, evenness of spring build up and resistance to unseasonable pollen dearth as compared to unsupplemented colonies.
- The major obstacle to more widespread use of lactalbumin based patties involves the difficulties in preparation (lack of consistency, messy, time consuming, insufficient quantities and storage problems).
- The resistance is to the hassle, not the expense.
- Some large operations amongst the respondents are prepared to buy commercially produced patties.
- The most successful methods used sugar and water avoiding syrup.
- Best bulk mixing method used a large rented bread dough machine and predetermined measures. A production line that eliminated guesswork and inconsistencies.
- The dough when stored and transported in large plastic bags kept well and handfuls were easily placed above brood nests.
- Patties too hard, soft or far from the brood only caused problems.
- Patty quality irretrievably deteriorates when too much water added.

\*\*\*\*\* \*\* \*\*\*\*\*

## HONEY PRODUCTION

*Honey production is expected to be up this year. Manuka and tawari produced excellent flows. Clover yields have been good but spotty.*

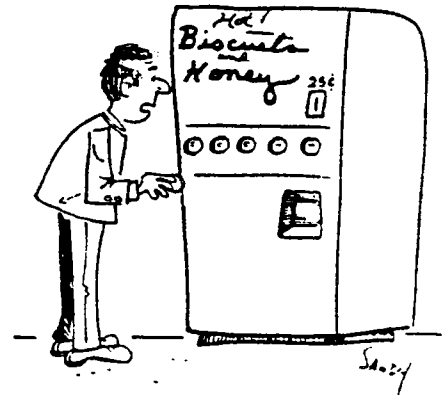
*Estimated crop for this district is 1450 tonnes. Nationally a 10,000 tonne crop is possible, almost double last year's. Estimates of 40 to 60 kg/hive are typical for many of the commercial operators in this area.*



## HONEY PRICES

Quotes vary this year, anything from \$1.35/kg to \$1.85 pro rata (cash upon sale of the packer's product)

\*\* \*\* \* \*\* \* \*\* \*

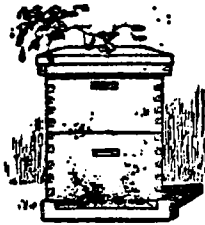


"— Clover, Buckwheat, Orange, Golden-red —"

## THE DISEASE SITUATION

During 1984 MAF inspected over 11% of the hives in the Tauranga apiary district. Unfortunately diseased hive numbers have gone up dramatically with 246 cases of American Foul Brood found by MAF alone. The main offenders were the commercial beekeepers, not the hobbyists as most presume.

Some pertinent figures as of January 31 1985 are:



Apiaries inspected (MAF)	306
% of district total	10.4%
No. of hives inspected (MAF)	4768
Apiaries diseased (MAF)	61
Hives diseased (MAF)	246
Apiaries diseased*	153
Hives diseased*	399
% hives diseased (1984/85)*	0.92%
% hives diseased (1983/84)*	0.76%

\* Industry totals.

One case of Chalk Brood was found by MAF Inspectors. It was subsequently destroyed for AFB. The source - imported Beltsville Bee Diet.

Sac Brood was again present but at reduced levels. Nosema has not proven to be troublesome this year.

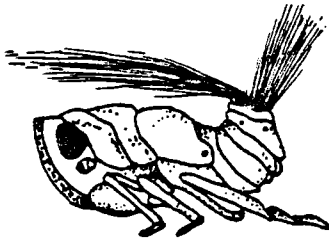
-o0o- --o0o-- -o0o-

## PRACTICAL BEEKEEPING IN NEW ZEALAND - BY ANDREW MATHESON

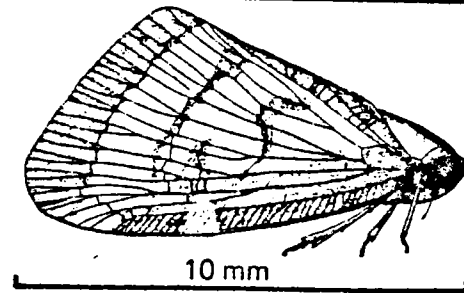
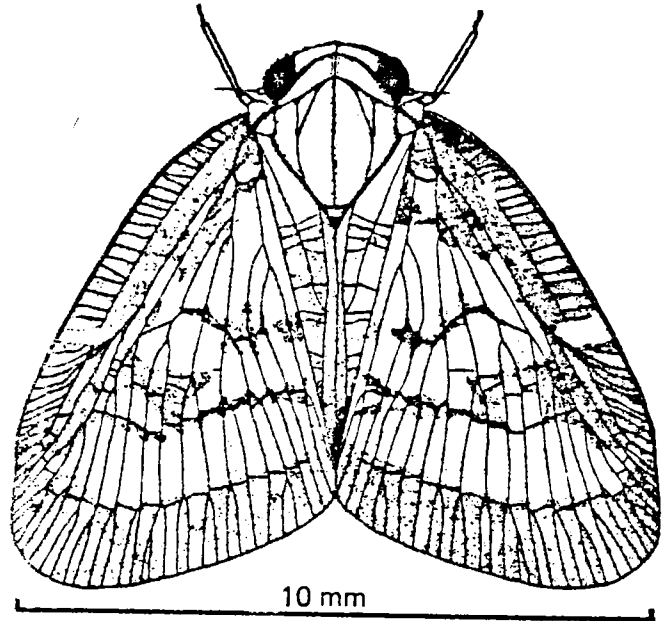
The response to this publication has been excellent. The Tauranga Library now has a copy to loan.

## TOXIC HONEY AGLINK (FPP 827)

The tutu honeydew AgLink has just arrived. Trevor Bryant has a stack of them on his desk. Write or call in for one. They are worth the effort!



: Vine hopper nymph



Vine hopper adult.

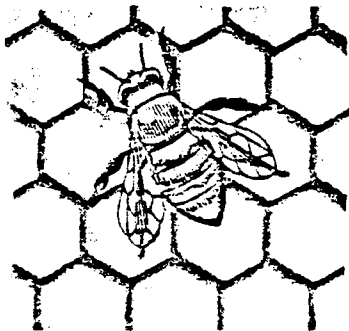
## STATEMENT OF INSPECTION

### ANOTHER NOT SO GENTLE REMINDER

Not everyone has returned their computer printout sheets. They were due in December. Please make their return a priority and be sure to:

- (a) Correct any mistakes;
- (b) Update your registrations, give full details; eg land owner's name, road, RD number (if any), district, number of hives, disease etc.

\*\*\* \* \*\*\* \* \*\*\*



## KIWIFRUIT POLLINATION PERMITS

Again, not all pollinators have submitted details on their hive movements. A list of orchardists' names, addresses and numbers of hives per orchard is required in lieu of permits.

\*\*\* \* \*\*\* \* \*\*\*

## DISEASE REPORTING

AFB is on the increase in this region. Yet the disease reports by the beekeepers are on the decrease - obviously beekeepers aren't treating disease seriously.

You are reminded that all diseased hives must be reported to the Ministry immediately as required by the Act. Your annual Statements include provision for a report, but this alone is not sufficient. You must contact us promptly.

There is more than one beekeeper in this area who has lost hives simply because his neighbour didn't report an outbreak promptly.

### A THOUGHT ON COMMITMENT:

Is the Industry in this area truly committed to disease control? Fundamentally that is what the above reminders are about. If the Industry is committed, the above are unnecessary.

MAF won't do it all for you, ultimately every beekeeper is responsible for controlling disease and preventing its spread. MAF's purpose is to co-ordinate that effort.



-oOo- -oOo- -oOo-

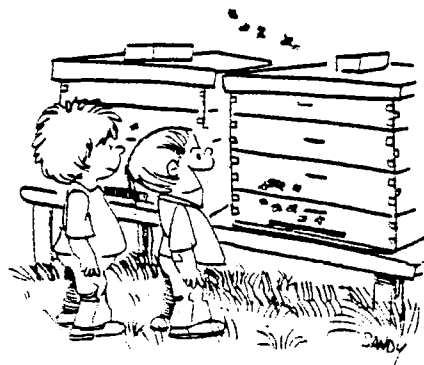
## NEW EXPORT MARKET OR "SKY'S THE LIMIT"

The recent US space shuttle STS 13 carried an interesting payload - 3300 Italian worker bees and a queen. The object - to observe comb building in outer space. The result, although disorganised at first, the bees regained their orientation and at zero gravity built 30½ square inches (200 cm<sup>2</sup>) of comb. The queen laid 35 eggs during the seven day flight. The cost - \$60-100,000 (NZ). The conclusion, the honey bees' engineering capability is still a marvel, surpassed by few other species. Dare I say, homo sapiens. Also NASA is producing eggs at approximately \$3000 each! Now if we organise a consortium, offer a discount, maybe we could sell a few eggs at say .....

\*\* \*\* \*

### NEW TREE BOOK

"Trees for the NZ Countryside - a Planters Guide" by J & B Mortimer is now available. This book contains descriptions of 300 species, both native and exotic, all illustrated in colour. There is a section on tree sources for nectar and pollen  
PRICE: \$35.00.

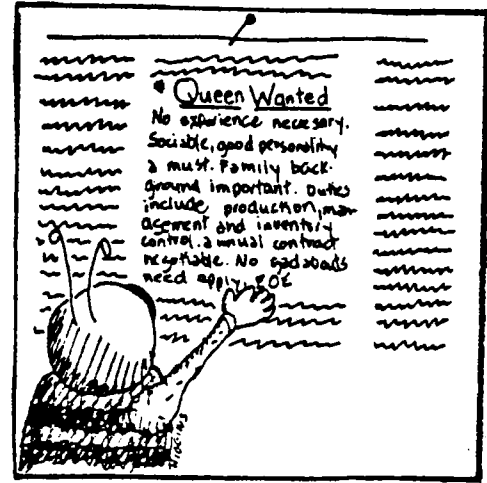


"Bees are the most intelligent creatures on earth - the queen rules."

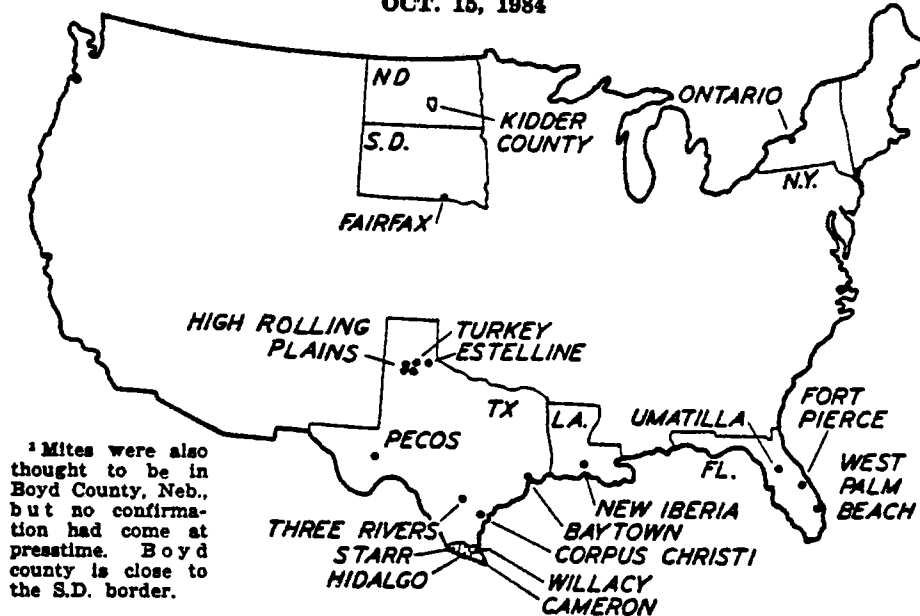
## ACARINE UPDATE

At least six US states have reported the presence of the Acarine mite (Acarapis woodi). The tracheal mite is now in North and South Dakota, Texas, Louisiana, Florida and New York.

Testing procedures are slow and many officials believe the pest will be found in many more states and possibly even Canada. California has established an emergency quarantine against the disease. All hives, bees etc. originating from or over-wintered in a mite infested state during the last two years will be prohibited entry. Offenders will be liable for up to \$50,000 NZ per act.



STATES WITH CONFIRMED ACARINE DISEASE<sup>1</sup>  
OCT. 15, 1984



## CERTIFICATE IN BEEKEEPING

The Bay of Plenty Community College, in conjunction with the NBA, are offering a two year self-study programme leading to a Certificate in Beekeeping. It includes written material (in the form of 12 modules), plus two short courses. Examination will be primarily oral and practical with no formal written tests at the course conclusion.





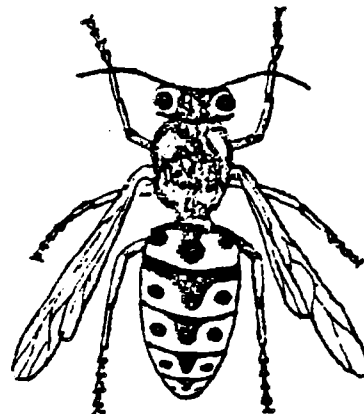
The fees are \$85.00 for each of the two years, a total of \$170.00. Suggested reading materials include 'The Hive and the Honey Bee'.

For more information contact: Certificate in Beekeeping  
Bay of Plenty Community College  
Private Bag  
RD 3  
Tauranga

---oo0oo---

## WASPS - THAT TIME OF YEAR AGAIN.

*Try using Vapona strips (dichlorvos), available from hardware and petrol stations. Use rubber gloves (it's toxic) and poke slices of the strip into holes, cavities etc. around the nest. It is best done in the evening, with full protective clothing.*



## CHINESE PAPER WASPS

*MAF Entomologist, Rudd Kleinpaste, has noted the spread of this exotic from South Auckland. Similar to the Tasmanian Paper Wasp in habit, it poses no economic threat. The Tasmanian version, and probably the Chinese Wasp too, have very potent stings and are best avoided.*



---oo0oo---

## I N D E X

Trevor promises an index in an upcoming issue, so if you are not saving your back copies of this Newsletter, now is the time to start.

## COMING EVENTS:

If interested, contact MAF (Ph: 82 069) for the dates and venues:

- May : "Expanding into Commercial Beekeeping"  
June : "Financial Management"  
- Budgeting, cash flows, financial planning.  
July : "Management by Objectives for Beekeepers"  
- Planning for Results.  
August : Disease Clinics in - Tauranga  
- Rotorua  
- Gisborne  
- Coromandel

Make sure to contact us for more information if you are interested.

Also, March 9 - Beekeepers Field Day (see elsewhere in this issue).



\*\*\* \*\*

## CAM JAY POLLINATION REPRINT

The reprint from Bee World regarding Cam's New Zealand experience will soon be available through Trevor at \$2.90.

### **OBSERVATIONS OF HONEYBEES ON CHINESE GOOSEBERRIES ('KIWIFRUIT') IN NEW ZEALAND**

by DOREEN AND CAMERON JAY

Department of Entomology, University of Manitoba, Winnipeg, Manitoba, Canada  
R3T 2N2

*The authors were funded by the New Zealand Kiwifruit Authority to study honeybee dispersal in kiwifruit orchards. They also undertook other experiments, and made various observations of honeybees on kiwifruit which they wish to share with other avid 'bee watchers' some of whom may have observed these interesting phenomena.*

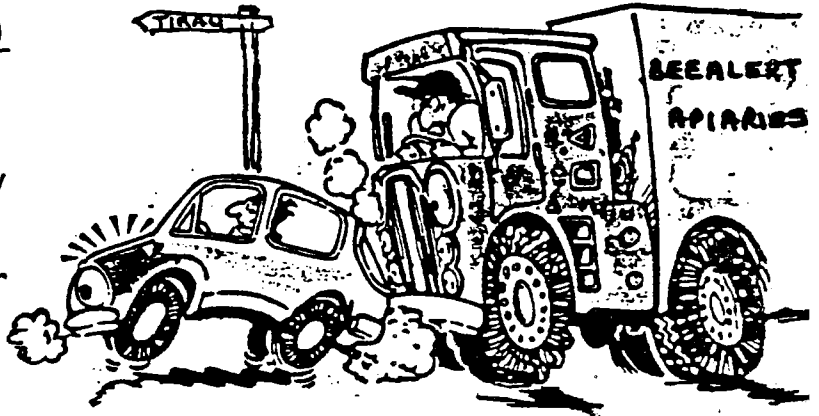


# BEEKEEPERS' FIELD DAY

(MAF: WAIKATO & BOP BRANCHES OF THE NBA)

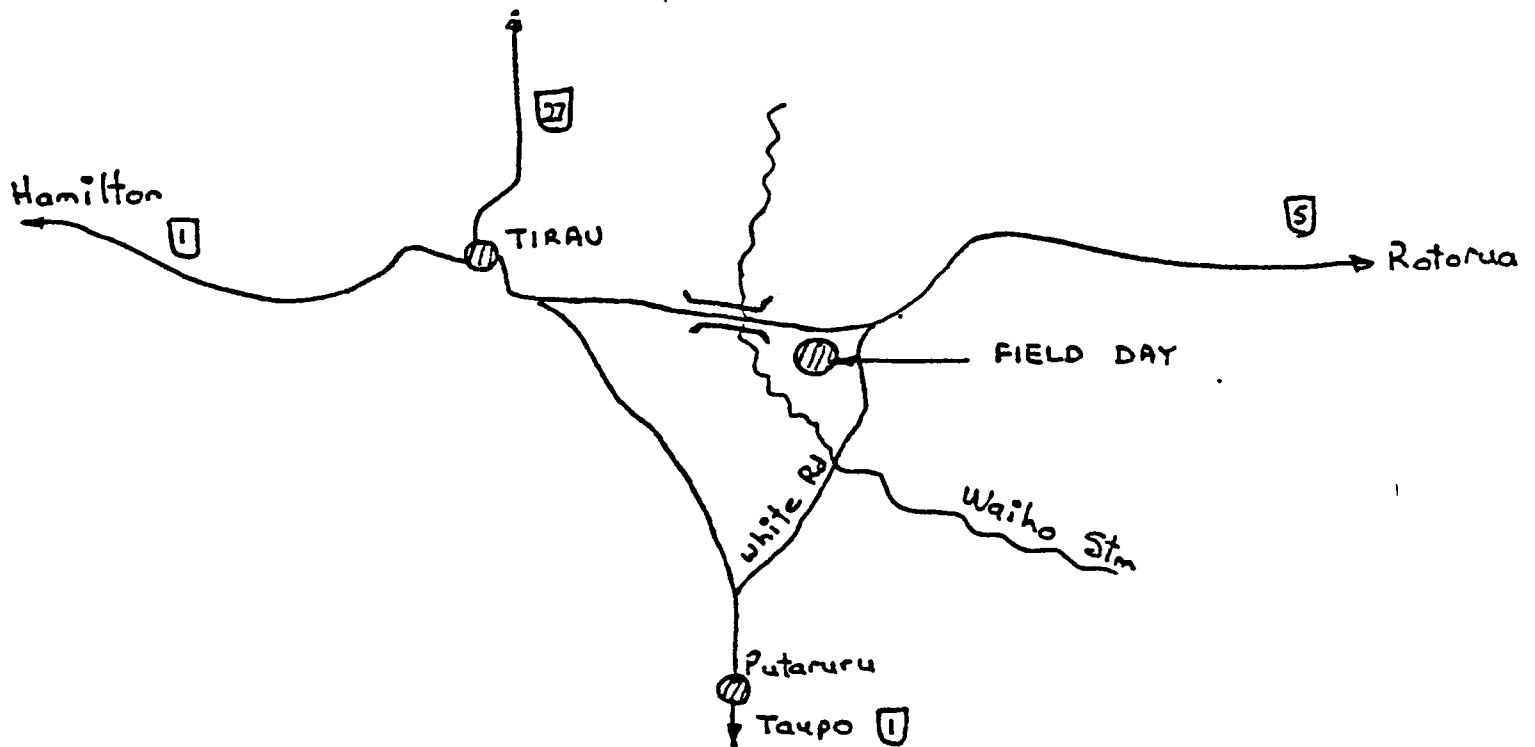
**WHERE:** Geoff Ernest's property  
4 km from Tirau on the  
Tirau-Rotorua Highway.  
Look for the 'honey for  
sale' signs

**WHEN:** Saturday March 9 1985  
Wet or fine



- PROGRAMME:**
- \* 10.00 am Cup of tea or coffee (supplied)
  - \* 11.00 am MAF report: Advisory programme, staff situation, honey crop, disease levels, etc
  - \* 12 noon Gadgetshield competition: Bring along your latest invention, large or small
  - \* 12.15 pm Lunch. Bring your own
  - \* 1.30 pm Kiwifruit pollination: MAF's report on the condition of colonies supplied to kiwifruit growers last season, plus a demonstration of hives supplied - the good, average and \_\_\_\_\_
  - \* 2.00 pm A speaker from the Ministry of Energy or the Alternate Fuels Association
  - \* Rest of the day your choice:
    - tour honey house
    - visit large museum
    - look at trade displays and demonstrations of lifting equipment
    - bring your bar-be-que and something for your evening meal, plus refreshments

**COVER CHARGE:** An entry fee of \$1.00 per adult (15 years and over) will be charged to cover costs and entry to the museum.



Please be careful when you turn into Geoff's place. There are two access points both off the very busy State Highway 5.

### FUMIGANT STRIPS

Degesch of Germany have produced a simple fumigant system that avoids some of the problems associated with methyl bromide.

- Application is by exposing the strip to air (tearing a tin foil pouch).
- Hydrogen phosphide is released from magnesium phosphide upon exposure to moisture.
- Spent strips can be burnt or buried.
- A one hour safety delay before gas release.
- Used to fumigate fruit and vegetables etc.
- Exposure time: 2 days.
- This product is toxic to humans, however, so all safety regulations apply.

Pharmochem (PO Box 40 032, Auckland 10) are distributing this product in bulk lots.

NB: A consortium is now being organised to receive a bulk shipment.  
See 'Trade Table' or contact Rod Walker at Comvita.

## TRADE TABLE

### BUSINESS FOR SALE

- 400 hives and extraction facilities
- Based in South Auckland.
- Sites in Auckland, Waikato and Coromandel

Contact: Arthur Ellis  
19 Ruawai Road  
Mt Wellington

### FOR SALE

- 600 migratory lids. Price negotiable.
- Used one season, excellent condition.

Contact: Paul at 420 790.

### FOR SALE

- Telescoping lids.
- Contact Norm Dean at 442 226.



### HAND DRIVEN EXTRACTOR FOR SALE

- Polypropylene tank with 4 frame cage
- Stand and stainless steel basin attached
- \$175.00 and in good condition.
- Contact Dave Howarth at Whenuakite 506.

### DEGESCH FUMIGANT STRIPS

Anyone interested in buying these German made wax moth fumigants contact Rod Walker at Comvita. They are available only in bulk orders (96 strips) and Rod needs some co-buyers. Each strip fumigates 15 m<sup>3</sup> of cut comb etc - for ≈\$7.62.

### FOR SALE

600 galvanised iron roofing tiles, 415 x 750.  
Chip surface on one side; being replaced as chip coming off.

Price: 50¢ each.

Contact: Rod Bell, MAF, Opotiki (Phone: 439)

*Clive Vardy*  
Clive Vardy  
Apicultural Advisory Officer

