

## Beekeeping / Short Courses

Tutors ..... Apicultural  
Advisory Officers

Offered at Telford (Balclutha),  
Flock House (Bulls) or various  
Polytechnics.

## Beekeeper Training

Tutor ..... Paul Marshall  
Telford Farm Training Institute.  
Private Bag, Balclutha Ph (0299) 81 550

## Research

Bee Pathologist ..... Dr Denis Anderson  
DSIR, Private Bag  
Auckland Ph (09) 893 660

Apicultural Scientist ..... Dr Mark Goodwin  
Ruakura Insect Control  
MAF, Private Bag.  
Hamilton. Ph (071) 62 839

## Bee Disease Diagnosis

Technician ..... Brian Milnes  
Plant Protection Centre  
MAF, PO Box 41  
Auckland. Ph (09) 676 026

## National Certificate in Beekeeping

Tutor ..... Nick Wallingford  
BOP Polytechnic  
Private Bag.  
Tauranga. Ph (075) 440 920

## MAF Consultants

Contact your nearest AAO

## NATIONAL BEEKEEPERS' ASSOCIATION

President ..... Allen McCaw  
2RD, Milton Ph (02997) 4614

Secretary ..... Steuart Goodman  
PO Box 4048  
Wellington Ph (04) 728 102

Librarian ..... John Heineman  
PO Box 112  
Milton Ph (02997) 4613 A/H  
Ph (02997) 4614 Bus.

The NBA has branches in the following districts:

Northland	Marlborough
Auckland	Nelson
Waikato	West Coast
Bay of Plenty	Canterbury
Poverty Bay	South Canterbury
Hawkes Bay	North Otago
South Western	Otago
(Palmerston North)	Southland

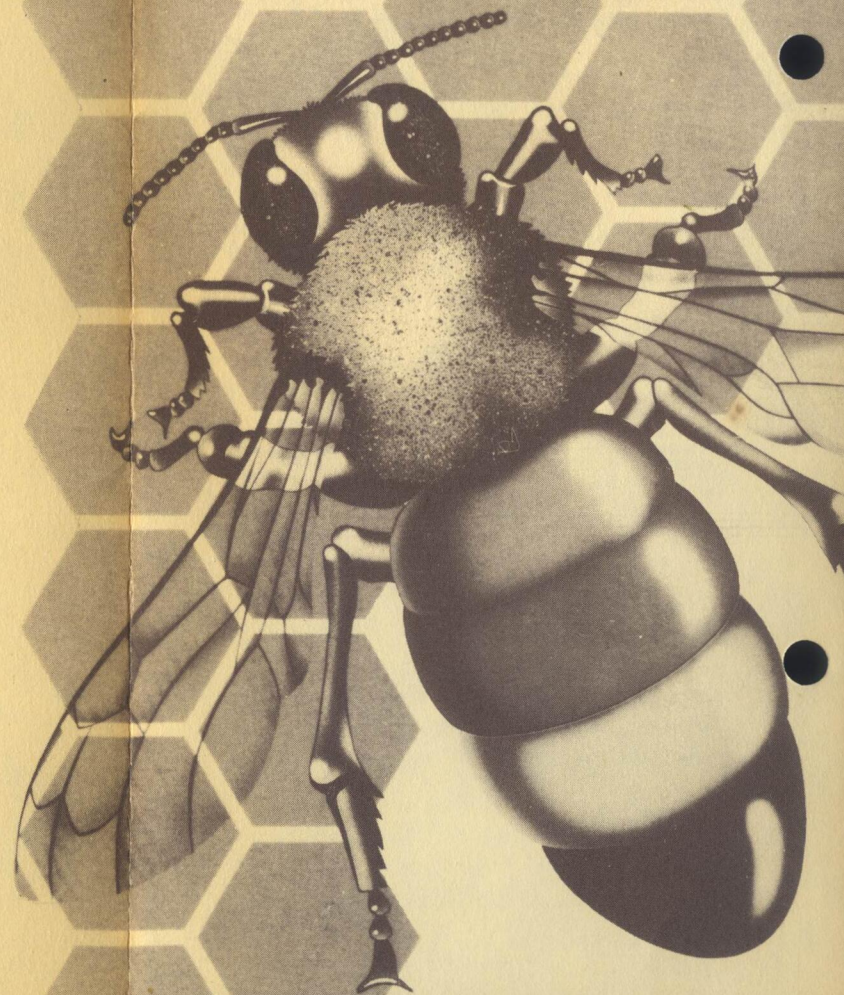
Contact the National Secretary or your local MAF  
Apicultural Advisory Officer for the name and  
address of branch presidents or secretaries.

## Advisory and Regulatory

### Apicultural Advisory Officers (AAO's)

Whangarei	(089)	487 179
Auckland	(09)	771 729
Hamilton	(071)	81 949
Tauranga	(075)	82 069
Palmerston North	(063)	68 079
Nelson	(054)	81069
Christchurch	(03)	794 100
Gore	(020)	89 590

# TO ALL BEEKEEPERS



National Beekeepers' Association  
of New Zealand (Inc.)



## THE NATIONAL BEEKEEPERS' ASSOCIATION OF NZ (INC)

### "Better Beekeeping - Better Marketing"

#### Membership of the National Beekeepers' Association (NBA)

- Commercial members who own 50 or more beehives, and pay a hive levy to the NBA (1)
- Ordinary members (with less than 50 hives) can join by paying the membership fee.
- As a member of the NBA you are entitled to all the benefits including full voting rights.
- You also receive, free of charge, four issues of "The New Zealand Beekeeper" magazine.

(1) levied each year in January under the Hive Levy Act 1974. For more information write to the National Secretary, National Beekeepers Association, PO Box 4048, Wellington.

### APPLICATION FOR MEMBERSHIP

Yes I would like to become a member of the NBA and enclose \$20.00 (GST incl) as my membership fee.

I understand this fee also entitles me to four issues of the "New Zealand Beekeeper" Magazine and access to the library.

Name: \_\_\_\_\_

Address: \_\_\_\_\_  
\_\_\_\_\_

## THE NBA WORKS FOR YOU

Dear Beekeeper,

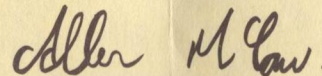
Our association is made up of committed and caring beekeepers who work together to protect our industry and to plan for its future growth.

But we need your help. We want you to become a member of our association. Let me tell you all about the benefits:

- **Policy:** We represent all beekeepers to the Ministry of Agriculture. We also work closely with other government and local body organisations, and with our advisers and scientists in MAF and DSIR.
- We have a vision for our industry and a plan for the future. You can read about this in our "Industry Plan". Be part of this.
- **Communication:** Our mission is "Better Beekeeping - Better Marketing". To achieve this we must have effective communication. This is why we hold regular branch meetings for you, also field days, seminars, conferences and industry planning workshops.
- **Library:** Become a member and you have access to the largest collection of beekeeping books and magazines in New Zealand. Would you like some slides, video tapes or movies on beekeeping? We've got those too.
- Our **quarterly magazine** "The New Zealand Beekeeper" is one of the best beekeeping magazines in the world. It has something for you and is free to members.
- We support **beekeeper education** at many Polytechnics. Why don't you become a master beekeeper by taking our two year Certificate Course at the Bay of Plenty Polytechnic? Do you have a son or daughter who wants a year's practical training in commercial beekeeping? Send them to the Farm Training Institute at Telford near Balclutha. Our industry has bursaries available that may assist.
- Industry Trust Funds are used to support **research** in pathology, pollination, queen bee production, honey chemistry and marketing strategies.
- **Promotional** and publicity material is available for members. Use our honey recipes, pens, stickers and posters to tell others about beekeeping.
- **Disease control:** MAF's Agricultural Quarantine Officers intercept over 200 samples of foreign honey per month! We work closely with MAF to prevent exotic bee diseases becoming established in New Zealand. We also financially support the disease control and monitoring programmes provided by MAF. All beekeepers need this service.

*I hope I've convinced you that our association really does work for you. But we need your support too. Why don't you become a member today?*

Yours sincerely,



Allen McCaw  
President National Beekeepers' Association